

Review Paper

Int'l J. of Aeronautical & Space Sci. 13(3), 267–281 (2012)
DOI:10.5139/IJASS.2012.13.3.267

A Flight Mechanics-Centric Review of Bird-Scale Flapping Flight

Aditya A. Paranjape*, **Michael R. Dorothy****, **Soon-Jo Chung***** and **Ki D. Lee******

University of Illinois at Urbana-Champaign, IL 61801, USA

Abstract

This paper reviews the flight mechanics and control of birds and bird-size aircraft. It is intended to fill a niche in the current survey literature which focuses primarily on the aerodynamics, flight dynamics and control of insect scale flight. We review the flight mechanics from first principles and summarize some recent results on the stability and control of birds and bird-scale aircraft. Birds spend a considerable portion of their flight in the gliding (i.e., non-flapping) phase. Therefore, we also review the stability and control of gliding flight, and particularly those aspects which are derived from the unique control features of birds.

Key words: Bird-size aircraft, Flapping flight, Flight mechanics, Micro aerial vehicle, Bio-inspired flight

1. Introduction

The recent survey papers on flapping flight highlight the intense attention that bio-inspired flight is receiving in the aerospace and robotics research community. Each of these survey papers addressed a particular broad sub-area of flight. Shyy and co-authors [1] focused on aerodynamics and structures; the papers by Girard [2] and Nayfeh [3] provide a complete review from a dynamics and control perspective; books by Azuma [4] and Mueller [5] form a complete tutorial on flapping flight. Brown [6] reviews the flapping flight of birds from the perspective of flight performance, with detailed observations on the flapping wing kinematics.

The aforementioned survey papers primarily concentrate on insect flight. This preponderance reflects the considerable work done by aeronautical as well as the robotics community at large toward the development of engineered insect flight [7-12]. One scientifically challenging aspect of insect flight is the unsteady and nonlinear aerodynamics. It is known that the aerodynamics of insect flight also involves several unconventional circulatory as well as non-circulatory mechanisms [13, 14]. However, since the flapping frequencies

are far higher than those of the flight dynamic modes, it suffices to model the aerodynamics via quasi-steady approximations for the purpose of stability analysis and control [9, 13, 14]. In contrast, the aerodynamics of bird and bat flight are relatively easier to model analytically. However, since the flapping frequency is similar to the natural frequency of several modes of the airframe (e.g., see [15]), the resulting flapping flight dynamics are much more complex than their insect-scale counterparts.

Development of bird-scale flapping flight has led to interesting results and advances in the flight mechanics and control of non-flapping flight as well, under the broad umbrella of wing articulation, morphing wing technologies, and bio-inspired maneuvers. In [16, 17], we developed an articulated wing aircraft which employed the (symmetric and asymmetric) wing dihedral for both longitudinal and lateral control. We also flight-tested the technology, which was the outcome of a first-principle reappraisal of flight mechanics of non-fixed-wing aircraft [18]. Leylek and Costello [19] performed a parametric study and stability analysis of a similar aircraft concept which uses a combination of active and passive articulation. Cuji and Garcia [20] analyzed the

This is an Open Access article distributed under the terms of the Creative Commons Attribution Non-Commercial License (<http://creativecommons.org/licenses/by-nc/3.0/>) which permits unrestricted non-commercial use, distribution, and reproduction in any medium, provided the original work is properly cited.

© * Postdoctoral Research Associate, Department of Aerospace Engineering, paranja2@illinois.edu
** Ph.D. Student, Department of Aerospace Engineering, dorothy1@illinois.edu
*** Assistant Professor, Department of Aerospace Engineering, sjchung@illinois.edu
**** Professor, Department of Aerospace Engineering, Corresponding author: kdlee@illinois.edu

force distribution on morphing aircraft wings which change shape to yield variable span-wise dihedral. They focused on turning flight and demonstrated that asymmetric wings produce a reduced load factor for every value of the turn rate. Obradovic and Subbarao [21, 22] computed the power requirements for wing morphing under dynamic loading from maneuvers and identified cases under which morphing is more efficient than traditional control mechanisms. Non-flapping aircraft with fixed as well as articulated wings have been used extensively to study the perching maneuver [18, 23-27, 52], which is unique to birds. The perching maneuver

has the potential to be adapted by bird-scale micro aerial vehicles (MAVs) to significantly improve their portfolio of maneuvering and mission capabilities.

The present review paper focuses on bird-scale flight, and complements the aforementioned papers. It is worth noting that although bird-like aircraft, such as the Festo SmartBird and the Aeroenvironment Hummingbird, have been developed in the recent years (see Fig. 1), and non-flapping aircraft have drawn considerable inspiration from bird flight, the academic literature on the *flapping* flight of birds is sparse compared to insect flight. One consequence is that there are very few results on the stability and control of flapping flight of birds. This paper attempts to consolidate the existing results in a tutorial-like framework.

Table 1. List of Symbols

Symbol	Meaning
C_L, C_D, C_{mac}	= coefficients of lift, drag, and quarter-chord pitching moment
D, Y	= drag and side force
F, M	= force and moment vectors
$J_{R, R}, J_{L, L}$	= moment of inertia tensor of the right and left wings in their respective wing root frames
J_R, J_L, J	= moment of inertia tensor of the right and left wings, and the aircraft body in the aircraft body frame
L, M, N	= body axis rolling, pitching and yawing moments
m_w, m	= mass of each wing, and mass of the aircraft
p, q, r	= body axis roll, pitch, and yaw rates
r_{CG}	= position vector of the aircraft center of gravity
S_w	= area of each wing
u, v, w	= body axis aircraft wind velocity components
u_B	= aircraft velocity vector with components in the body frame
V	= local wind velocity vector
X, Y, Z	= $x, y,$ and z -component of force
α, β	= angle of attack and sideslip angle
ψ_L, ψ_R	= left and right wing sweep
γ, χ	= flight path angle and wind heading angle
ϕ_L, ϕ_R	= dihedral angle of left and right wing
ϕ, θ, ψ	= Euler angles
θ_L, θ_R	= left and right wing incidence
$\omega_B = [p, q, r]$	= angular velocity vector of the b
ω_L, ω_R	= angular velocity of the left and right wings (with respect to the body)



(a) Festo SmartBird (b) Aeroenvironment Hummingbird

Fig. 1. Festo SmartBird and the Aeroenvironment Hummingbird are recent examples of bio-inspired aircraft. Their flight mechanisms share several commonalities with birds that they are designed to mimic. Source: Wikipedia. URLs: <http://upload.wikimedia.org/wikipedia>

In this paper, we review flapping flight of birds from a flight mechanics and control perspective. We review the first principles of flapping flight, and present results on stability and control from the literature. In Section 2, we derive the equations of motion of a flapping wing aircraft. In Section 3, we review flapping wing kinematics. Stability and control of flapping flight are discussed in Sections 5 and 6. Two case studies, the Festo SmartBird and a robotic bat testbed developed by the authors, are presented in Section 7.

2. Equations of Motion

In this section, we state the equations of motion for a rigid flapping wing aircraft. The reader is referred to [17] for a complete derivation, and to [16] for a derivation of the equations of motion of an aircraft with *flexible* flapping wings. The equations presented in this section have been borrowed from [17].

2.1 Wing Kinematics

Two approaches are commonly used to model the kinematics of a flapping wing. The first and more common approach starts by identifying the *stroke plane* of the wing, which is defined by the wing root and the two extreme positions of the wing tip during a flapping cycle. The stroke plane is visually convenient, and its orientation correlates well with maneuvers. For example, the stroke plane is almost horizontal in hovering flight, and almost vertical in forward flight. A drawback of using the stroke planes for modeling is that the resulting kinematics are relatively more cumbersome to formulate.

The second approach is more convenient and models the wing motion as a composition of standard Euler rotations. Wing motion represented by Euler rotations is not difficult to visualize. In fact, it directly describes the physical facets of flapping motion, viz., lead-lag, flapping (up-and-down beating), and twist.

Let the matrix T_{FG} denote the rotation matrix which transforms the components of a vector from the G frame to F , where the frames F and G are arbitrary. The frame R is the frame based at the right wing root. It is related to the B frame via a sweep rotation ψ_R at the wing root, followed by dihedral rotation ϕ_R and a twist rotation θ_R about the y axis. Let R_1, R_2, R_3 denote the body-to-wing frame rotation matrices for wing rotations about the root hinge corresponding to lead-lag (ψ_R), dihedral (ϕ_R) and incidence (θ_R), respectively. Therefore,

$$R_1 = \begin{bmatrix} \cos\psi_R & \sin\psi_R & 0 \\ -\sin\psi_R & \cos\psi_R & 0 \\ 0 & 0 & 1 \end{bmatrix}, R_2 = \begin{bmatrix} 1 & 0 & 0 \\ 0 & \cos\phi_R & \sin\phi_R \\ 0 & -\sin\phi_R & \cos\phi_R \end{bmatrix}, \quad (1)$$

$$R_3 = \begin{bmatrix} \cos\theta_R & 0 & -\sin\theta_R \\ 0 & 1 & 0 \\ \sin\theta_R & 0 & \cos\theta_R \end{bmatrix} \quad (2)$$

The following rotation matrix connects the right-wing root frame to the body frame:

$$T_{BR}(\psi_R, \phi_R, \theta_R) = R_1^T R_2^T R_3^T \quad (3)$$

A similar matrix $T_{BL}(\delta_L, \theta_L)$ can be derived for the left wing.

2.2 Local Velocity and Force Calculation

Without any loss of generality, consider the right wing of an aircraft, with (semi) span $b/2$ and chord $c(y)$, where y denotes the spanwise location. Let $V_\infty = [u \ v \ w]^T$ denote the body axis wind velocity of the aircraft. Let $\omega_B = [p \ q \ r]$ denote the body axis angular velocity of the fuselage.

The angular velocity perceived at a spanwise strip at a distance y along the span is given by

$$\Omega_R = \begin{bmatrix} p \\ q \\ r \end{bmatrix} + \begin{bmatrix} 0 \\ 0 \\ \dot{\psi}_R \end{bmatrix} + R_1^T \begin{bmatrix} \dot{\phi}_R \\ 0 \\ 0 \end{bmatrix} + R_1^T R_2^T \begin{bmatrix} 0 \\ \dot{\theta}_R \\ 0 \end{bmatrix} \quad (4)$$

and the local velocity at that strip on the right wing is

$$V(y) = V_\infty + S(\Omega_R)r_{ac}, \quad (5)$$

where r_{ac} is the position vector of the aerodynamic center of the station given by

$$r_{ac} = R_1^T R_2^T R_3^T \begin{bmatrix} x_{ac} \\ y \\ 0 \end{bmatrix}, \quad (6)$$

and x_{ac} is the chordwise location of the aerodynamic center with respect to the mid-chord. The local aerodynamic force at the station is given by the vector sum of the lift and the drag, with components calculated in the body frame:

$$dF = 0.5\rho \|V(y)\|^2 c(y)(C_L l / \|l\| + C_D d / \|d\|)dy, \quad (7)$$

where

$$l = -S(V(y))R_1^T R_2^T R_3^T [0 \ 1 \ 0]^T / \|V(y)\|, \quad (8)$$

$$d = -V(y) / \|V(y)\| \quad (9)$$

Detailed expressions for C_L and C_D are given in Sec. 2.4. The local aerodynamic moment at the station is given by

$$dM = S(r)dF + \rho \|V(y)\|^2 c(y)C_{m_{ac}} R_1^T R_2^T R_3^T [0 \ 1 \ 0]^T dy \quad (10)$$

The total aerodynamic force and moment are obtained by integrating the above expressions, performed in practice by using strip theory [28].

2.3 Equations of Motion

In the following equations, given a vector $p = [p_1, p_2, p_3]$, define the cross product matrix operator

$$S(p) = \begin{bmatrix} 0 & -p_3 & p_2 \\ p_3 & 0 & -p_1 \\ -p_2 & p_1 & 0 \end{bmatrix} \quad (11)$$

Let r_{cg} denote the position vector of the centre of gravity (CG) of the aircraft, while $r_{cg, R}$ and $r_{cg, L}$ denote the position vectors of the CG of the right and left wings, respectively. The translational equations of motion are given by the following vector expression [17]:

$$F = m(\dot{u}_B + S(\omega_B)u_B + S(\dot{\omega}_B)r_{cg} + S(\omega_B)\dot{r}_{cg} + (S^2(\omega_B)r_{cg}) + m_w S(\dot{\omega}_R)\mathbf{T}_{BR}r_{cg,R} + m_w S^2(\omega_R)\mathbf{T}_{BR}r_{cg,R} + m_w S(\dot{\omega}_L)\mathbf{T}_{BL}r_{cg,L} + m_w S^2(\omega_L)\mathbf{T}_{BL}r_{cg,L} \quad (12)$$

and the CG variation is given by

$$\dot{r}_{cg} = \frac{m_w}{m}(S(\omega_R)\mathbf{T}_{BR}r_{cg,R} + S(\omega_L)\mathbf{T}_{BL}r_{cg,L}) \quad (13)$$

This CG variation could play an important role in cases where the wing weight is substantial and where the CG position is used as a control variable, as in [10]. The CG variation is rarely used by birds, but can be used by insects and insect-size aircraft. It is also used for controlling under-water vehicles.

Therefore, the equations of rotational motion are given by [17]

$$M = mS(\dot{r}_{cg})u_B + mS(r_{cg})\dot{u}_B + mS(\omega_B)S(r_{cg})u_B + J\dot{\omega}_B + \dot{J}\omega_B + S(\omega_B)J\omega_B + J_R\dot{\omega}_R + \dot{J}_R\omega_R + S(\omega_B)J_R\omega_R + J_L\dot{\omega}_L + \dot{J}_L\omega_L + S(\omega_B)J_L\omega_L, \quad (14)$$

where

$$\begin{aligned} \dot{J}_R &= \mathbf{T}_{BR}(S(\omega_R)J_{R,R} - J_{R,R}S(\omega_R))\mathbf{T}_{BR}^T, \\ \dot{J}_L &= \mathbf{T}_{BL}(S(\omega_L)J_{L,L} - J_{L,L}S(\omega_L))\mathbf{T}_{BL}^T, \\ \dot{J} &= \dot{J}_R + \dot{J}_L, \end{aligned} \quad (15)$$

and

$$M = M_{aero} + mS(r_{cg}) \begin{bmatrix} -g \sin \theta \\ g \cos \theta \sin \phi \\ g \cos \theta \cos \phi \end{bmatrix} \quad (16)$$

In the above equations, $J_{R,R}$ and $J_{L,L}$ denote the moments of inertia of the right and left wings, respectively, in their respective local coordinate frames based at the wing root.

The kinematic equations relate the angular velocity of the aircraft to the rates of change of the Euler angles:

$$\begin{aligned} \dot{\phi} &= p + q \sin \phi \tan \theta + r \cos \phi \tan \theta \\ \dot{\theta} &= q \cos \phi - r \sin \phi \\ \dot{\psi} &= (q \sin \phi + r \cos \phi) / \cos \theta \end{aligned} \quad (17)$$

The equations which relate the position of the aircraft to its translational velocity are essentially decoupled from the flight dynamics, and are given by

$$\begin{aligned} \dot{X} &= V \cos \gamma \cos \chi \\ \dot{Y} &= V \cos \gamma \sin \chi \\ \dot{Z} &= -V \sin \gamma \end{aligned} \quad (18)$$

Finally, the flight path angle (γ) and the wind axis heading angle (χ) in equation (18) are defined as follows:

$$\begin{aligned} \sin \gamma &= \cos \alpha \cos \beta \sin \theta - \sin \beta \sin \phi \cos \theta - \sin \alpha \cos \beta \cos \phi \cos \theta \\ \sin \chi \cos \gamma &= \cos \alpha \cos \beta \cos \theta \sin \psi + \sin \beta (\sin \phi \sin \theta \sin \psi + \cos \phi \cos \psi \\ &\quad + \sin \alpha \cos \beta (\cos \phi \sin \theta \sin \psi - \sin \phi \cos \psi)) \end{aligned} \quad (19)$$

2.4 Aerodynamic Models

The aerodynamic model presented by DeLaurier [28] is one of the most widely used aerodynamic models in the flapping flight literature. It incorporates the unsteady added mass effect, delayed stall as well as downwash due to a finite wing. The model is in the form of explicit analytical formulae for computing the forces and moments at every span-wise station on the wing, and the blade element theory is used for computing the net forces and moments. The model is limited by its use of a linear C_L - α relationship, which restricts its use to large, slow flapping ornithopters.

Goman and Khrabrov [29] presented a model for an oscillating airfoil that is applicable to high α flight. It incorporates a nonlinear C_L - α relationship, valid at post-stall angles of attack, and delayed stall is modelled as arising due to chord-wise movement of the flow separation point on the upper surface of the wing. They have a similar nonlinear model for computing the quarter-chord pitching moment. However, the model is obtained for airfoils rather than finite wings. Bommanahal and Goman [30] presented a high fidelity model based on Volterra series for oscillating rigid airfoils which can also be applied to flapping wings.

Another popular model used in the literature is the finite state model of Peters and co-authors [31, 32], which is motivated by and improves upon the classic model of Theodorsen [33]. In particular, instead of using Theodorsen's function, the finite state approximation yields a closed-form analytical model.

Goman and Khrabrov's model offers at least two advantages over the other existing models. First, the model is cast in the form of a single ordinary differential equation (ODE) and two algebraic equations, one each for lfte and the quarter chord pitching moment. The state variable for the ODE corresponds, physically, to the chordwise location of flow separation on the airfoil. Therefore, the model is quite easy to implement as part of a numerical routine. Second, the model is inherently nonlinear and applicable to post-stall conditions.

The following equation describes the movement of the

separation point for unsteady flow conditions

$$\tau_1 \dot{\nu} + \nu = \nu_0 (\alpha - \tau_2 \dot{\alpha}) \quad (20)$$

where τ_1 is the relaxation time constant, τ_2 captures the time delay effects due to the flow, and ν_0 is an expression for the nominal position of the separation point. These three parameters are identified experimentally or using CFD. The coefficients of lift and quarter-chord moment are then given by

$$C_L = \frac{\pi}{2} \sin(\alpha(1+\nu+2\sqrt{\nu})) \quad (21)$$

$$C_{m_{ac}} = \frac{\pi}{2} \sin(\alpha(1+\nu+2\sqrt{\nu})) \left[\frac{5+5\nu-6\sqrt{\nu}}{16} \right]$$

There is, unfortunately, no simple expression for the sectional drag coefficient. Assuming laminar flow on the wing, the sectional drag coefficient can be written as

$$C_D = \frac{0.89}{\sqrt{Re}} + \frac{1}{\pi e A_R} C_L^2 \quad (22)$$

where A_R is the aspect ratio of the wing, $Re = \frac{\rho c V_\infty}{\mu}$ is the chordwise Reynolds number, and e is Oswald's efficiency factor. A refined model for calculating drag, incorporating dynamic stall, may be found in DeLaurier [28]. Note that inertial contributions from the motion of the surrounding air need to be added to the forces computed using the above coefficients.

3. Flight Mechanics of Flapping

The kinematics of flapping are different in forward flight and hover. In forward flight, the wing primarily flaps and twists, and the lead-lag motion, if any, is strictly for the purpose of control. On the other hand, while hovering, the lead-lag motion is as important as the other two degrees of freedom. In this section, we separately consider simple theoretical models of forward flight and hovering. The purpose of this modelling is to understand the phase relations between the three degrees of freedom, and determine ways to choose the amplitude and bias value of each degree of freedom.

3.1 Model

In this section, we consider a rigid wing. Since the phase relations between the different degrees of freedom are independent of the spanwise location on a rigid wing, we consider a single representative spanwise location. Without

loss of generality, suppose that the angle of attack of the aircraft (defined with respect to the fuselage reference line) is zero. Then, the local velocity vector V on the right wing at a distance b from the root is given by

$$V = [V_\infty - \dot{\psi} b \cos \phi, 0, \dot{\phi} b] \quad (23)$$

not counting the effect of θ , the wing twist. The oscillatory motion of the wing is given by

$$\phi = \phi_0 + \phi_a \sin(\omega t) \dots (\text{flapping})$$

$$\psi = \psi_0 + \psi_a \sin(\omega t + \xi_\psi) \dots (\text{lead-lag}) \quad (24)$$

$$\theta = \theta_0 + \theta_a \sin(\omega t + \xi_\theta) \dots (\text{twisting})$$

so that

$$\dot{\phi} = \omega \phi_a \cos(\omega t)$$

$$\dot{\psi} = \omega \psi_a \cos(\omega t + \xi_\psi) \quad (25)$$

$$\dot{\theta} = \omega \theta_a \cos(\omega t + \xi_\theta)$$

It is worth noting that sinusoidal functions in the above expression can be generated using nonlinear oscillators, such as the central pattern generator (CPG) networks described in Sec. 6. Then, the local angle of attack is given by

$$\alpha \approx \frac{\omega b \phi_a \cos(\omega t)}{V_\infty - \omega b \psi_a \cos(\omega t + \xi_\psi)} + \theta_0 + \theta_a \sin(\omega t + \xi_\theta) \quad (26)$$

Assuming linear aerodynamics and ignoring the added mass effect, the cycle-averaged values of lift and thrust are given by

$$L = \frac{\rho c C_{L,\alpha}}{2} \frac{\omega}{2\pi} \int_0^{2\pi/\omega} V^2 \alpha(t) dt \quad (27)$$

$$T = \frac{\rho c C_{L,\alpha}}{2} \frac{\omega}{2\pi} \int_0^{2\pi/\omega} V^2 \alpha(t) \frac{\omega b \phi_a \cos(\omega t)}{V_\infty} dt$$

where c is the chord length.

3.2 Forward Flight

In forward flight, we set $\psi_a = 0$. Thus, from (23), we can write

$$V^2 \triangleq \|V\|^2 = V_\infty^2 + b^2 \dot{\phi}_a^2 = V_\infty^2 + \omega^2 b^2 \phi_a^2 \cos^2(\omega t)$$

Substitution into (27) yields the following expression for cycle-averaged values of lift:

$$L = \frac{\rho c C_{L,\alpha}}{2} \left(V_\infty^2 + \frac{(\phi_a \omega)^2 b^2}{2} \right) \theta_0 \quad (28)$$

We deduce that the average value of lift at a given V_∞ depends only on two variables: the bias value of wing incidence angle, θ_0 , and the *peak* flapping speed of the wing, given by $\phi_a \omega$. Interestingly, the phase difference ξ_θ does not change the cycle averaged value of lift, which is a consequence of choosing a linear aerodynamic model.

The role of the phase difference ξ_θ becomes apparent when one computes the thrust produced during a flapping cycle. Since the thrust is proportional to $\int \gamma^2 \alpha(t) \cos(\omega t) dt$ (from (27)), we compute $\alpha(t) \cos(\omega t)$:

$$\alpha \cos(\omega t) = \frac{\omega b \phi_a}{V_\infty} \cos^2(\omega t) + \theta_0 \cos(\omega t) + \theta_a \sin(\omega t + \xi_\theta) \cos(\omega t) \quad (29)$$

It follows that thrust is maximised when we choose $\xi_\theta = \pi/2$, i.e., when

$$\sin(\omega t + \xi_\theta) \cos(\omega t) = \cos^2(\omega t)$$

The cycle-averaged value of thrust is given by

$$T = \frac{\rho c C_{L,\alpha}}{2} \left(\frac{\omega b \phi_a V_\infty}{2} + \frac{3(\omega \phi_a b)^3}{8V_\infty} \right) \left(\theta_0 + \frac{\omega b \phi_a}{V_\infty} \right)$$

The above results demonstrate that both thrust and lift increase for a given V_∞ with increasing $\frac{\omega \phi_a b}{V_\infty}$. The above results also suggest an interesting point: it is possible, at least in principle, to produce thrust without using pitch oscillations, i.e., by setting $\theta_a = 0$. Alternately, at least within the limits of linear aerodynamics, θ_a can be increased to obtain greater thrust, while the choice of the bias parameter θ_0 can be dictated by lift requirements alone.

Remark: The term $\frac{\omega b}{V_\infty}$ is usually referred to as reduced frequency, and b is replaced in the standard definition of reduced frequency by c , the chord length. The term $\frac{\omega b \phi_a}{V_\infty}$ is a scaled version of the *Strouhal number*, and it is a measure of whether the flow is dominated by viscosity and vortex shedding (Strouhal number ≈ 1) or fast quasi-steady motion (Strouhal number $\approx 10^{-4}$).

3.3 Hovering Flight

In hovering flight, $V_\infty \approx 0$, so that (26) becomes

$$\alpha \approx \frac{\phi_a \cos(\omega t)}{\psi_a \cos(\omega t + \xi_\psi)} + \theta_0 + \theta_a \sin(\omega t + \xi_\theta) \quad (30)$$

Clearly, in order for α to be finite and the cycle averaged lift in (27) to be positive, we need $\cos(\omega t + \xi_\psi) = -\cos(\omega t)$, so that the phase difference between lead-lag and plunging motions is given by $\xi_\psi = \pi$. The choice of θ_0 and θ_a can be made on the

basis of lift and thrust requirements, respectively, as in the case of forward flight. Note, however, that the cycle averaged drag will not be zero and hence a non-zero cycle averaged value of thrust is required to maintain the hover.

Remark: The lead-lag motion is a secondary motion in forward flight. The phase relationship obtained here for hovering is indeed used in forward flight as well, e.g., in the CPG-based scheme in [34].

3.4 Force Production during Fast Flight and Hovering

Although the preceding discussion in this section derived conditions under which positive lift and thrust can be generated in a flapping cycle, it did not specifically highlight the distribution of forces in a given cycle. A typical flapping cycle consists of two strokes: a downstroke where the wing flaps down in forward flight (or forward in hovering flight), and an upstroke. Figure 2, taken from [6], shows the typical flapping cycle of a pigeon in forward flight. Sketches (A - C) show the downstroke, while (D - E) show the upstroke. The wing produces both lift and thrust predominantly in the forward downstroke. During the upstroke, the wing still produces some lift, but little or no thrust. Note the bent outer segment in Sketch D: this is a consequence of a degree of passivity in its hinging at the root, i.e., where it is attached to the inner wing. This folding of the wing reduces the drag produced during the upstroke. For a small part of the upstroke, the wing tip does provide a small amount of propulsive force, presumably due to a delayed reversal of motion as compared to the inner wing.

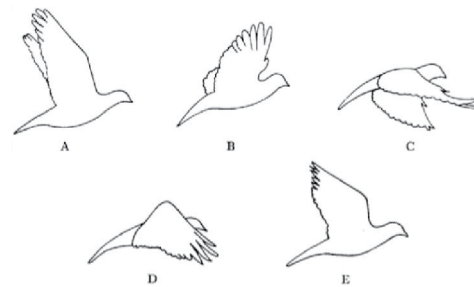


Fig. 2. A typical flapping cycle of a pigeon in forward flight, from Brown [6].

Figure 3 shows the downstroke and upstroke in slow flight (which is not exactly hovering, but a close analog). In slow flight, the role of upstroke and downstroke are reversed. A bulk of lift and thrust are obtained from the *upstroke* [6]. On the other hand, the downstroke yields some lift, but no significant propulsive force. In particular, the propulsive force during the upstroke comes from the rapid, almost

instantaneous, pronation and extension of the wing shown in Sketch C of Fig. 3(b) [6].

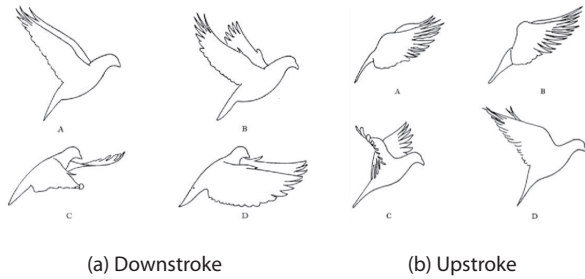


Fig. 3. A typical flapping cycle of a pigeon in forward flight, from Brown [6].

This discussion serves to illustrate a limitation of the discussion in the previous section where the kinematics of hovering were modelled using a first-principles approach. The effects of the rapid wing “flick” are nearly impossible to capture in that framework, but it provides a bulk of the propulsive force and therefore cannot be ignored in force and moment calculations. Such phenomena represent a challenge even to the general aerodynamic modelling of flapping flight.

4. Effect of Nonlinear Aerodynamics and Wing Flexibility

4.1 Aerodynamics

There are several important nonlinear effects that affect the aerodynamics of flapping wings. Broadly, their influence depends strongly on the Reynolds number, Re , i.e., on the size and speed of aircraft. The contributions themselves can be split into two sets: (1) those that alter the circulatory lift, such as by deforming the C_L - α curve, and (2) non-circulatory terms which are generated by inertial effects.

The aerodynamics at moderate to high Reynolds numbers ($Re > 10^4$) are dominated primarily by traditional circulatory mechanisms of lift and thrust generation. The other significant contributor is the added mass effect, which may contribute up to 20% of the net aerodynamic force on the aircraft, depending on the weight of the aircraft.

The delayed stall effect primarily leads to flapping-phase-dependent hysteresis in the C_L - α curve, causing the value of optimum phase difference between pitch and flapping (derived in Sec. 3.2) to shift from 90deg. In fact, the optimum value stated in the literature is approximately 95deg, and this value is equally influenced by the structural flexibility of the wing.

The aerodynamics at low Re are strongly driven by unconventional mechanisms, notably wake capture and delayed stall, the latter caused by the stabilization of leading edge vortices on the wing. These effects together contribute nearly 30% of the net lift [9]. In addition, insects (which are the stereotypical representatives of low Re flight) are known to use unconventional inertial mechanisms such as clap-and-fling which make use of the added mass effect for producing lift and thrust [1].

The effectiveness of the unconventional mechanisms listed above is primarily a result of the rapid flapping of insect wings. Whereas birds and bats (high Re fliers) typically beat their wings at frequencies of roughly 5-10Hz, insect wings are known to beat at frequencies running from 100Hz to 250Hz. At such flapping frequencies, although the aerodynamics themselves are highly nonlinear, the flight dynamics and control themselves are unaffected by the transient properties of the aerodynamics and depend entirely on the cycle-averaged values of the aerodynamic forces and moments. On the other other hand, quasi-steady approximations of aerodynamic forces and moments match poorly with actual values in case of birds and bats.

4.2 Effect of Wing Flexibility on Force Production

Wing flexibility affects the efficiency of flapping flight in three ways, by changing (a) the local wind speed, (b) the local angle of attack, and (c) the phase relations between twisting, flapping and lead-lag. To overcome the detrimental effects of this altered phase relationship, a different phase relation from that of a rigid wing must be commanded at the wing root [35].

A comprehensive experimental study on the effect of flexibility on flapping wing propulsion was performed by Heathcote, Gursul, and co-authors [36, 37]. They considered three wings: inflexible, flexible, and highly flexible. For spanwise flexibility, their results showed that a moderate degree of flexibility offers a considerable improvement over a rigid wing, but a highly flexible wing shows a considerable deterioration in performance. They point out a close correspondence between the Strouhal number (measured as a function of mid-span amplitude), and force production and efficiency. The propulsive efficiency, in particular, peaks for *Strouhal number* ≈ 0.1 - 0.2 . At higher Strouhal numbers, a moderately flexible wing shows a marked improvement in propulsive efficiency.

For chordwise flexibility, they observed that although the thrust produced by the wing increases with increasing flexibility, so does drag. Thus, a moderate amount of flexibility is still the optimal configuration.

Flexibility plays another role in flapping flight, namely reducing the sensitivity of the fuselage to gusts [38] and periodic disturbances from flapping. Passive flexible joints are known to help in flow control and delaying wing stall. As shown in Sec. 3, they also help help the wing to generate lift and thrust through unconventional mechanisms.

5. Stability

There are very few results describing a formal stability analysis of flapping flight. A probable cause for this paucity is a belief that the stability of an aircraft in flapping flight can be related to that in gliding flight, under the assumption that flapping frequencies typically exceed the natural modal frequencies of the airframe [39]. This is occasionally used to justify a quasi-steady modelling of flapping flight aerodynamics. It is instructive, therefore, to review the stability of bird-sized aircraft in gliding flight.

5.1 Stability of Gliding Flight

Birds lack a vertical tail, which could potentially render them inherently unstable in yaw, depending on the relative location of the center of gravity and the wings. It has been argued by Taylor and Thomas [38] and Sachs [40-42] that birds are laterally-directionally stable despite the absence of a vertical tail.

The stability of birds comes from three sources: (1) drag, (2) lift, and (3) pendulum effect. Taylor and Thomas [38] showed that drag and pendulum effect are the dominant contributors to stability. The wing itself, according to them, is sufficient to provide longitudinal stability provided it is located behind the center of gravity. Sachs [41, 42] derived analytical approximations to the standard flight dynamic modes (short period, spiral, Dutch roll), and showed that the wings are indeed sufficient to provide even lateral-dynamic stability. The stability is largely a result of a favorable placement of the CG with respect to the wing.

In contrast with the arguments in the aforementioned references, Paranjape, Chung, and Selig [17] argued that birds would most likely be laterally-directionally unstable under routing flying conditions. The nature of the instability, arising from the Dutch roll mode, depends on the wing dihedral angle. For large dihedral angles, the Dutch roll mode is indeed stabilized, but such large dihedral angles are rarely used during gliding flight in the midst of soaring or cruising.

Wing flexibility is believed to play a role in stabilizing the airframe, reducing its sensitivity to gusts, and in improving

the performance. It was shown by Paranjape and co-authors [16] that flexibility does not necessarily bring about a significant improvement in the performance, and can in fact degrade certain metrics such as the coordinated (zero sideslip) turn rate by reducing the trim speed for a given tail setting. Moreover, unless the wing is highly flexible, there is no qualitative difference in the stability of rigid and flexible wings. Therefore, it is safe to conclude that wing flexibility helps in making the wing and the aircraft lighter, improves the efficiency of passive mechanisms, and even aids flow control, but does not, by itself, improve the traditional flight mechanic performance metrics and stability.

In [43], the authors used an approach identical to [17], but replaced the aerodynamic model with a high-drag model. They demonstrated that the lateral-directional dynamics can be stabilized by drag. In fact, increasing the drag coefficient alone can stabilize the dynamics completely [44].

5.2 Stability of Flapping Flight

The stability of the airframe during flapping flight has been as much a matter of contention as that of gliding flight. Taylor and Thomas [39] argued that flapping wing aircraft are stable longitudinally as well as laterally-directionally, although they lack a vertical tail. The stability in pitch is largely a consequence of the horizontal tail, but is also a consequence of the flapping kinematics [45]. Mwongera and Lowenberg [45] argued that forces arising from circulatory mechanisms tend to be stabilizing, while those that arise from translational mechanisms (such as the unsteady added mass effect) do not contribute to stability. Consequently, they concluded that flyers such as birds tend to be stable, while insects do not tend to be stable. The survey of the stability of insect flight in [2] complements this observation. A study of the modal structure of longitudinal insect flight dynamics by Leonard [46] showed that the instability in insect flight arises primarily from a slow mode.

Flapping motion gives rise to limit cycles rather than equilibria in the state-parameter space. Stability analysis of limit cycles is performed by computing the Floquet multipliers of the linearized dynamics about the limit cycles (much like the eigenvalues of the linearized dynamics about equilibria) [47].

Bifurcation analysis is one of the most sophisticated and generic methods for analysing the global stability of nonlinear systems. Numerical continuation methods are used to compute the steady states (equilibria and the limit cycles) of the system, together with the corresponding eigenvalues or Floquet multipliers. Bifurcation and continuation methods have been used widely to predict instabilities in

flight dynamics, aircraft structures, and integrated aircraft-structure-propulsion systems [48].

The first application of bifurcation methods to flapping flight was reported recently by Mwongera and Lowenberg [45]. They considered an MAV consisting of two wings, each with a span of 10cm, and a fuselage, but no tail. They used continuation and bifurcation methods to study the stability of the longitudinal flapping dynamics for different flight conditions as well as for varying the longitudinal position of the wings.

Interestingly enough, Mwongera and Lowenberg's study concluded that the longitudinal stability depends primarily on the flapping frequency of the wing, with secondary dependence on the longitudinal position of the wing. The latter observation is in stark contrast to the conventional understanding that placing the wing behind the CG ensures pitch stability and vice-versa. In this particular case, it was seen that the lead-lag motion of the wing supplied the necessary stabilizing moments. Moreover, the observed instabilities were largely benign. Figure 4, reproduced from [45], shows the flapping limit cycle amplitudes, together with their stability, as a function of the flapping frequency and longitudinal position of the wing. The unstable regions in Fig. 4 are obtained via period-doubling or Neimark-Sacker bifurcations, which give rise to quasi-periodic behavior [47].

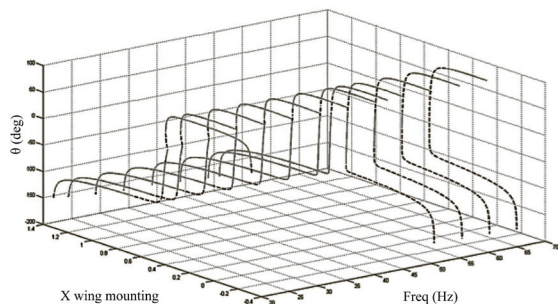


Fig. 4. Bifurcation diagram showing the pitch angle amplitude as a function of the flapping frequency and the longitudinal position of the wing [45]. Solid points indicate stable limit cycles, and dashed lines indicate unstable limit cycles.

Dielt and Garcia [49] reported a stability analysis of the longitudinal dynamics of a bird-sized ornithopter with a wing span of 72cm. They observed unstable longitudinal dynamics, where the instability was divergent, and the corresponding eigenvector affected all longitudinal states more or less uniformly. The unstable mode was fast (compared to the slow unstable modes in the prior references in this section). Additionally, a stable phugoid-like slow mode was also detected, along with a fast stable mode.

One could ponder about the possibility of a correlation

between the stability of flapping and gliding flight of an aircraft under identical conditions (flight speed and angle of attack). There is no conclusive evidence to suggest any correlation. The most obvious analog is flutter: a wing whose plunging and twist dynamics are themselves stable in isolation can still undergo flutter due to adverse phase relationships between plunging and twisting. Moreover, from the work of Mwongera and Lowenberg [45], it appears that an airframe that is unstable in gliding could be rendered stable due to flapping. Whereas the lack of a correlation does not appear surprising, it strikes at the root of the rationale behind quasi-steady modelling of flapping flight for stability analysis. Quasi-steady modelling may not work for stability prediction because it leaves no room for instability induced by adverse phase relations between the different elements of the flapping flight dynamics, since it implicitly assumes a stably beating wing interacting with an approximately static fuselage.

Moreover, quasi-steady modelling of the aerodynamics is likely to yield erroneous estimates even of the performance, because medium and large sized birds flap their wings at frequencies which are comparable to the natural frequencies of the air frame. This is one of the reasons why unsteady aerodynamic modelling of flapping wings is essential for analysing bird flight.

6. Flight Control

In this section, we review recent work on control of flapping flight. Specifically, we focus on two aspects of control: the choice of control inputs and the choice of control methods.

6.1 Control of Gliding Flight

Control of gliding flight appears at first sight to be no different than the control of conventional fixed wing aircraft. However, there are some crucial differences: (1) birds lack a vertical tail and a rudder, and (2) the control system in birds is overactuated. In fact, most birds can exert at least eight control inputs: three degrees of freedom on each wing and two on the horizontal tail (rotations about the in-plane axes). Moreover, birds can control the deflections of their wing leading edge and trailing edge feathers, as well as feathers on top of the wing surface. Together, the feathers play the roles of ailerons, trailing edge flaps, leading edge slats and wing-top spoilers on conventional aircraft. Thus, strictly speaking, the problem of matching the desired control input to the appropriate control surfaces represents a problem in control

allocation in over-actuated systems [50]. To the best of our knowledge, the literature is devoid of reports wherein this approach has been applied bird-scale MAVs.

In order to judge the capabilities and limitations of control inputs available to birds, it is occasionally instructive to consider their reverse-engineered instances in the MAV literature. For example, Abdulrahim et al. [51] optimized the wing twist actuation for a flexible membrane-like wing for achieving a rapid roll rate. Paranjape, Chung and co-authors [16, 17] developed an MAV concept which uses the wing dihedral for longitudinal as well as lateral-directional control. The concept shed additional insight into the roles of quarter chord pitching moment and trailing edge flaps in yaw control, and was flight tested successfully [18]. The MAV developed by the authors has been shown in Fig. 5, while Fig. 6 shows a perching maneuver performed by the MAV using articulated wing-based control. The Festo SmartBird (cf. Sec. 7) uses a two-degree of freedom horizontal tail for pitch and yaw control, and the wing dihedral is varied symmetrically for controlling the flight path.

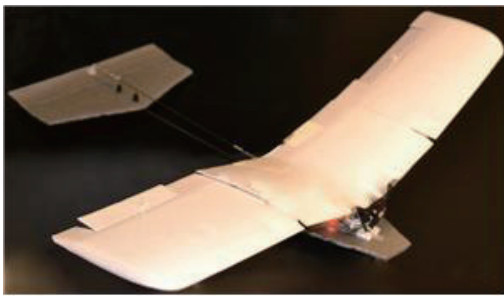


Fig. 5. Articulated wing MAV which uses asymmetric dihedral setting for longitudinal and lateral-directional control.

Gliding is important in birds because it helps to conserve energy in flight. It allows birds to extract energy from the surrounding air flow to increase their endurance, a process known as dynamic soaring [53]. Even without the possibility of dynamic soaring, which requires specific wind conditions, it was shown by Sachs [54, 55] that switching between flapping and gliding flight can in fact yield a much improved performance, even in terms of the flight speed, over optimized steady state flapping flight.

Once the control inputs are chosen, the control problem involving stabilization and tracking can be solved by any of a vast number of well-established methods, although methods such as adaptive control [56] or dynamic inversion [18, 57] may be required to address problems arising from nonlinearities from an unconventional choice of control inputs. Occasionally, if the wing is highly flexible, a control approach which incorporates wing deformation may need to be employed to stabilize the elastic dynamics of the wing and

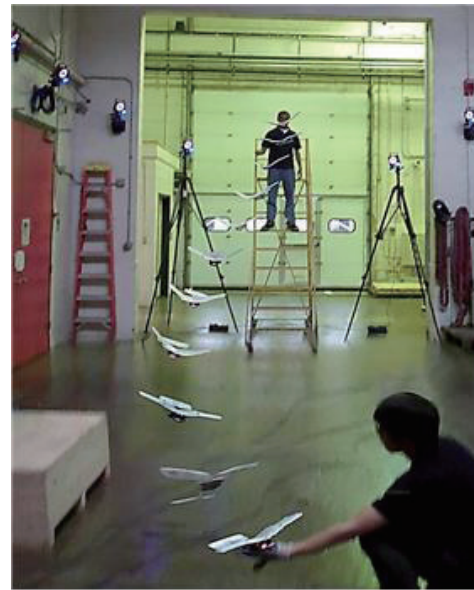


Fig. 6. Perched landing on a human hand, performed by an articulated wing MAV.[65]

Table 2. Control Inputs from the Literature

Reference	Pitch Control	Yaw Control	Remarks
Chung [34]	Flapping/Lead-lag phase	Lead-lag amplitude	Forward & turning flight
Bhatia [57]	Lead-lag amplitude & offset (bias)	Lead-lag amplitude & offset (bias)	Hovering
Festo (cf. Sec. 7)	Horizontal tail	Horizontal tail	Forward flight
Hedrick [58]	N/A	Twist and flapping amplitudes	Turning (forward) flight

ensure that it produces the desired force and moment [66].

6.2 Choice of Control Inputs for Flapping Flight

The modelling in Section 3 shows that there is a wide variety of possible control inputs for flapping. They are listed in Table 2, together with their primary effectiveness. We also indicate sources in the literature where they have been employed.

There is clearly a considerable diversity in the choice of control inputs. Chung [34] and Bhatia [58] used the kinematics of lead-lag motion of the two wings to control the motion. In fact, Bhatia [58] demonstrated that, for hovering, LQR control of the lead-lag motion alone is more robust than LQR using larger sets of control parameters. This is to be expected since lead-lag motion is the primary wing motion during hovering flight. Chung and Dorothy considered

forward and turning flight in [34], and although their choice of control variable was motivated only by physical intuition, it was seen to be equally effective. In addition to lead-lag control, they leveraged wing beating frequency, the phase difference between flapping and pitch, and flight mode switching to accomplish multiple tasks, including altitude/velocity regulation and smooth turning.

The SmartBird developed by Festo (cf. Sec.) used a V-tail for pitch as well as lateral-directional control. Therefore, despite flapping-based propulsion, the three-axis control of the SmartBird was essentially identical to that of a fixed wing aircraft.

Hedrick and Biewener [59] observed the turning flight of cockatoos and cockatiels, which differ considerably in size and speed. They observed that both birds used asymmetry in the flapping and feathering amplitudes for roll and yaw control. This can be explained along the lines of dihedral-based yaw control mechanism proposed in [17]. Asymmetric feathering yields direct roll control, but very little yaw control. On the other hand, asymmetric flapping (i.e., asymmetric dihedral) provides direct yaw control, but very little roll control. Therefore, feathering and flapping act as independent roll and yaw control mechanisms, respectively. The reader is referred to Orlowski and Girard [2] for a similar table of control inputs found in the literature on *insect* flight.

In contrast to birds, whose wings are structurally more or less undeformed, bats deform and camber their wings significantly in flight, as demonstrated by Breuer and co-authors [60]. Their wings are cambered and fully stretched during downstroke, and folded inwards during the upstroke. This helps to reduce the drag, and particularly since the upstroke contributes no thrust either. Birds are known to fold their wings to maneuver rapidly, such as to perform barrel rolls, but not systematically in a single stroke as in the case of bats. The primary reason is that bat wings are made of

skin, which acts like a flexible, malleable membrane, while feathers that make up bird wings are more or less rigid. This feature may contribute to a bat's ability to complete a 180deg turn in approximately three wingbeats [60].

For turns, birds as well as bats bank considerably, turning the lift vector inward [6, 61]. However, banking is not solely responsible for turning. Díaz and Swartz [62] estimated that, for bats, at most 70% of the required turning force was due to banking. The remaining portion was the result of a crabbed turn - changing yaw orientation during upstroke and flight direction in the subsequent downstroke [62]. In contrast, studies of turns performed by the Parajape et al. [16, 17] showed that when asymmetric dihedral (or flapping angle) is used in gliding turns, the body bank angle is considerably smaller (less than 20deg) even for large turn rates.

6.3 Control Methods for Flapping Flight

The survey papers by Orlowski and Girard [2], and by Taha, Hajj and Nayfeh [3] give a comprehensive review of control methods employed commonly for flapping flight aircraft. In this paper, we review two control approaches, each of which sheds light on a fundamental aspect of controlling flapping flight. The first approach is based around central pattern generators (CPGs), and uses synchronization properties of coupled oscillators [34]. The second approach is based on linear quadratic regulator (LQR) control, and indicates the importance of specific control effectors and on the relevance of specific state variables for feedback.

Chung and Dorothy proposed a CPG-based controller, leveraging the properties of the symmetric Hopf oscillator [34]. The key idea was to produce smooth signals for multiple motions while allowing for great flexibility in top-level controller design. Such a coupled oscillator network could easily incorporate frequency, amplitude, and phase

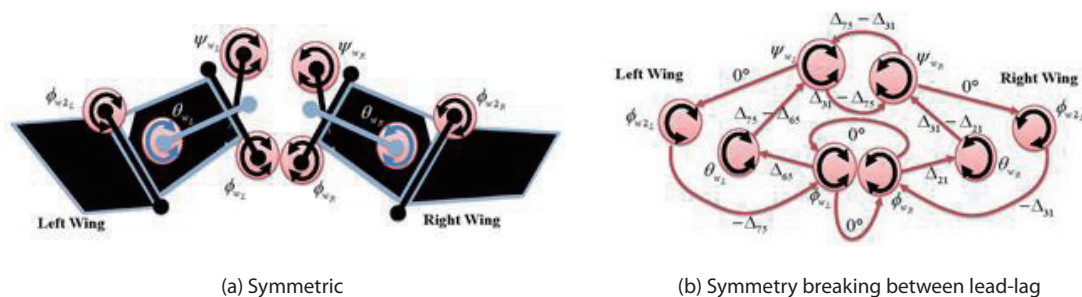


Fig. 7. CPG array for the two wings. The lead-lag, flapping and feathering angles are denoted by ψ_w , ϕ_w and θ_w respectively. Under nominal flight conditions, the the lead-lag motion would be out-of-phase with flapping by 180deg, while feathering would lead flapping by 90deg, as shown in Sec. 3. The terms ϕ_w represent the second joint in each bat wing, and also ensure that the net phase difference summed over a cycle in the CPG network is zero. The second plot shows symmetry-breaking between lead-lag, with in-phase plunging motion, for lateral-directional stability and control [34]

difference modulation. They used all three types of control logic - frequency for velocity control, amplitude for yaw control, and phase difference for roll and pitch control. Such a CPG network could also reproduce intra-wingbeat frequency controllers like the split-cycle [11] without requiring any analytic solutions [63]. Figure 7 shows the schematic of a CPG array for the two wings. The first plot shows a nominal, symmetric configuration for forward flight. The nominal phase differences were derived in Sec. 3. The second plot shows a configuration where the phase difference between the lead-lag motion of the two wings is used as a control input, with the plunging motion of the two wings retained in sync. This is not a unique choice of control inputs, but serves to illustrate how the phase differences and symmetry-breaking can be honed for control. A block diagram showing an implementation of CPG-based control is shown in Fig. 8.

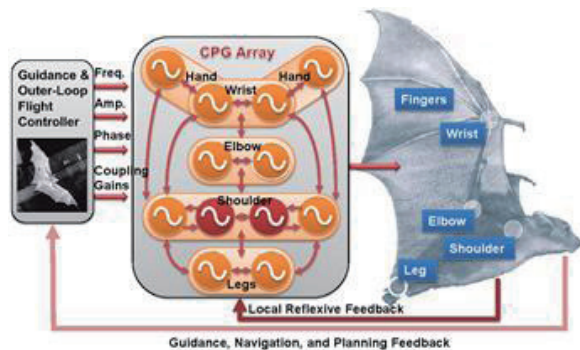


Fig. 8. Block diagram showing CPG-based control of a bat-like flapping wing aircraft [34].

Bhatia and co-authors [58] presented an LQR-based controller for hovering flight in the presence of gusts. Their metric for evaluating controllers was the maximum speed of a transient gust that the controller could withstand. They designed an LQR controller and systematically scaled the penalty functions and varied the choice of control inputs, while evaluating the maximum tolerable gust speed. They concluded that controlling the amplitude and bias of lead-lag motion is not just sufficient but also the most effective way of achieving tolerance to gusts. They also demonstrated, at least for their particular model, that it is necessary to feed back angular positions and angular rates for increased gust tolerance, while translational position and velocity feedback play a comparatively insignificant role. The final version of their controller (obtained after the parameter study) yielded satisfactory tolerance to longitudinal gusts whose speeds matched the tip speeds of the wing, and to lateral gusts with a speed equal to a third of the tip speed.

7. Mechanical Implementation

In this section, we will describe two examples of mechanical implementation of bird-scale flapping flight - the Festo SmartBird and a robotic bat testbed developed at the University of Illinois at Urbana-Champaign (UIUC). The purpose is to consider practical design issues that arise in the implementation of the aforementioned ideas, which were presented largely from a theoretical standpoint, as well as solutions used in practice.

7.1 Festo SmartBird

The SmartBird, designed by Festo, is probably the first successful flapping wing remote-controlled aircraft which mimics some relevant characteristics of avian flight (in this case, a sea gull). The aircraft incorporated several technologies, and most details are unpublished. We will summarize some relevant design features, gathered from the product brochure, and relate them to the theoretical results presented in the previous section.

Each wing of SmartBird has two segments. The flapping motion of the outer segment is not synchronized actively with that of the inner segment, but is instead coupled to the inner segment passively. The twisting motion of the wing, however, is controlled actively for optimizing the lift and thrust produced during a flapping cycle. No additional lifting devices are used. Interestingly, the wing is designed to be rigid in torsion despite its size, although reasons for this design choice are unknown.

The inboard segment primarily generates lift, while the outboard segment provides thrust. This separation of roles is also seen in large birds such as sea gulls and swans. The SmartBird utilizes a horizontal tail with two degrees of freedom: it can deflect about the transverse axis for pitch control, and about the longitudinal axis of the aircraft for yaw control. Roll control is achieved by controlling the torsion motion of the two wing.

7.2 Robotic Bat

The RoboBat was developed to investigate the effectiveness of different control strategies on forces and moments [27, 64, 65]. RoboBat incorporates six degrees of freedom (flapping, lead-lag, and pitch for each wing), which would be synchronized and controlled via a CPG network. Each wing is driven by a single DC motor, while the phase difference between the different degrees of freedom is controlled by servo motors. Figure 9 shows the Robotbat testbed mounted

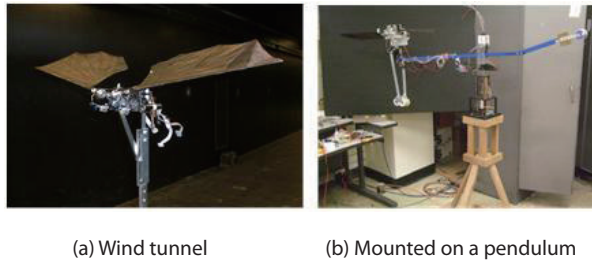


Fig. 9. Robotic bat testbed developed at UIUC.

in a wind tunnel for early testing, as well as the current experimental setup where it is mounted on a rotating 3-DOF pendulum.

In order to test closed-loop CPG control, it was placed on a compound pendulum, restricting the system to longitudinal modes only. The Quanser-built encoder interface integrated in the pendulum provided orientation and velocity feedback. Phase differences between flapping and lead-lag proved to be effective in stabilization and control [27]. An example trajectory for pitch control is shown in Fig.10. However, the system was not as sensitive to control input as indicated by prior simulations, as the compound pendulum system increased the pitch moment of inertia.

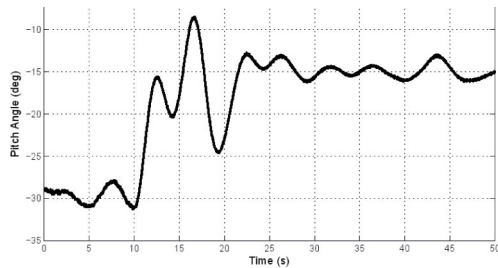


Fig. 10. RoboBat - Experimental Results of Pitch Control.

8. Conclusions and Future Work

In this paper, we surveyed the literature on flapping flight of birds and bird-like airplanes from a flight mechanics perspective, in a tutorial-like setting. Stability and control of flapping flight were addressed with insightful case studies from the literature. Open problems in flapping flight in cover both stability and control. In particular, very little is understood about lateral-directional stability of birds and bird-scale aircraft in the flapping phase. Quasi-steady aerodynamic modelling, which forms the cornerstone of a considerable body of work on the modelling and analysis of flapping flight, presents a strong possibility of erroneous stability and control results in bird-scale flapping flight due to a close match between the typical flapping frequencies

and the natural frequencies of the flight dynamics of the air frame. Flapping wing aircraft, unlike typical fixed wing aircraft, are over-actuated, which presents as yet largely unsolved problems in control allocation. Despite these shortcomings in our knowledge of flapping flight, there are some instances of flapping wing MAVs being developed and flown successfully by the academia as well as the industry. A deeper understanding of stability, coupled with sophisticated schemes to optimally utilize the multitude of control inputs, will significantly enhance the performance and maneuverability of flapping wing aircraft in the future.

References

- [1] Shyy, W., Aono, H., Chimakurthi, S. K., Trizila, P., Kang, C.-K., Cesnik, C. E. S., and Liu, H., "Recent progress in flapping wing aerodynamics and aeroelasticity", *Progress in Aerospace Sciences*, Vol. 46, 2010, pp. 284-327.
- [2] Orłowski, C. T., and Girard, A. R., "Dynamics, stability, and control analysis of flapping wing micro-air vehicles", *Progress in Aerospace Sciences*, Vol. 0, No. 0, 2012, pp. 18-30.
- [3] Taha, H., Hajj, M., and Nayfeh, A., "Flight dynamics and control of flapping-Wing MAVs: A review", *Nonlinear Dynamics*, 2012, pp. 1-33.
- [4] Azuma, A., *The Biokinetics of Flying and Swimming*, 2nd ed., American Institute of Aeronautics and Astronautics, Reston, VA, 2006.
- [5] Mueller, T. J., *Fixed and Flapping Wing Aerodynamics for Micro Air Vehicle Applications*, American Institute of Aeronautics and Astronautics, Reston VA, 2001.
- [6] Brown, R. H. J., "The flight of birds." *Biological Reviews*, Vol. 38, 1963, pp. 460-489.
- [7] Deng, X., Schenato, L., and Sastry, S. S., "Flapping flight for biomimetic robotic insects: Part II: Flight control design", *IEEE Transactions on Robotics*, Vol. 22, No. 4, 2006, pp. 789-803.
- [8] Deng, X., Schenato, L., Wu, W. C., and Sastry, S. S., "Flapping flight for biomimetic robotic insects: Part I-system modeling", *IEEE Transactions on Robotics*, Vol. 22, No. 4, 2006, pp. 776-788.
- [9] Dickinson, M. H., Lehmann, F.-O., and Sane, S. P., "Wing rotation and the aerodynamic basis of insect flight", *Science*, Vol. 284, No. 5422, 1999, pp. (5422):11954-1960.
- [10] Doman, D. B., Oppenheimer, M., and Sigthorsson, D., "Wingbeat shape modulation for flapping-wing micro-air-vehicle control during hover", *Journal of Guidance, Control and Dynamics*, Vol. 33, No. 3, 2010, pp. 724 = 239.
- [11] Doman, D. B., Tang, C. P., and Regisford, S., "Modeling interactions between flexible flapping-wing

spars, mechanisms, and drive motors”, *Journal of Guidance, Control and Dynamics*, Vol. 34, No. 5, 2011, pp. 1457 – 1473.

[12] Wood, R. J., “The first takeoff of a biologically inspired at-scale robotic insect”, *IEEE Transactions on Robotics*, Vol. 24, No. 2, 2008, pp. 341 – 347.

[13] Weis-Fogh, T., “Energetics of hovering flight in hummingbirds and in drosophila”, *Journal of Experimental Biology*, Vol. 56, 1972, pp. 79-104.

[14] Weis-Fogh, T., “Quick estimates of flight fitness in hovering animals, including novel mechanisms for lift production”, *Journal of Experimental Biology*, Vol. 59, 1973., pp. 169 – 230.

[15] Roget, B., Sitaraman, J., Harmon, R., Grauer, J., Hubbard, J. E., and Humbert, J. S., “Computational study of flexible wing ornithopter flight”, *Journal of Aircraft*, Vol. 46, No. 6, 2010, pp. 2016 – 2031.

[16] Paranjape, A. A., Chung, S.-J., Hilton, H. H., and Chakravarthy, A., “Dynamics and performance of tailless micro aerial vehicle with flexible articulated wings” *AIAA Journal*, Vol. 50, No. 5, 2012, pp. 1177 – 1188.

[17] Paranjape, A. A., Chung, S.-J., and Selig, M. S., “Flight mechanics of a tailless articulated wing aircraft”, *Bioinspiration & Biomimetics*, Vol. 6, No. 2, 2011, paper 026005.

[18] Paranjape, A. A., Kim, J., and Chung, S.-J., “Closed-loop perching of aerial robots with articulated flapping wings”, *IEEE Transaction on Robotics*, 2012. under review.

[19] Leylek, E., and Costello, M., “Effects of articulated wings on the stability of small unmanned aircraft”, *AIAA Atmospheric Flight Mechanics Conference*, Minneapolis, MN, 2012.

[20] Cuji, E., and Garcia, E., “Prediction of aircraft dynamics with shape changing wings”, *Active and Passive Smart Structures and Integrated Systems*, edited by M. Ahmadian, Proc. of SPIE, United States, 2008, pages 69282B-1-69282B-10

[21] Obradovic, B., and Subbarao, K., “Modeling of dynamic loading of morphing-wing aircraft”, *Journal of Aircraft*, Vol. 48, No. 2, 2011, pp. 424 – 435.

[22] Obradovic, B., and Subbarao, K., “Modeling of flight dynamics of morphing wing aircraft”, *Journal of Aircraft*, Vol. 48, No. 2, 2011, pp. 391 – 402

[23] Cory, R., and Tedrake, R., “Experiments in fixed-wing UAV perching”, *AIAA Guidance, Navigation and Control Conference*, Honolulu, HI, 2008.

[24] Crowther, W. J., “Perched landing and takeoff for fixed wing UAVs”, In *NATO Symposium on Unmanned Vehicles for Aerial, Ground, and Naval Military Operations*, Ankara, Turkey, 2000.

[25] Wickenheiser, A., and Garcia, E., “Longitudinal dynamics of a perching aircraft”, *Journal of Aircraft*, Vol. 43,

No. 5, 2006, pp. 1386 – 1392

[26] Wickenheiser, A., and Garcia, E., “Optimization of perching maneuvers through vehicle morphing”, *Journal of Guidance, Control and Dynamics*, Vol. 31, No. 4, 2008, pp. 815-823.

[27] Dorothy, M., Paranjape, A. A., Kuang, P. D., and Chung, S.-J., *Toward Bioinspired Robotic Aircraft: CPG-based Control of Flapping and Gliding Flight*, American Institute of Aeronautics and Astronautics (AIAA), Reston, VA, 2012. ISBN: 9781600868979.

[28] DeLaurier, J. D., “An aerodynamic model for flapping-wing flight”, *Aeronautical Journal*, Vol. 97, No. 964, 1993, pp. 125 – 130.

[29] Goman, M., and Khrabrov, A., “State-space representation of aerodynamic characteristics of an aircraft at high angles of attack”, *Journal of Aircraft*, Vol. 31, No. 5, 1994, pp. 1109 -1115.

[30] Bommanahal, M., and Goman, M., “Nonlinear unsteady aerodynamic modeling by volterra variational approach”, In *Prof. AIAA Atmospheric Flight Mechanics Conference*, Minneapolis, MN, 2012.

[31] Peters, D. A., Karunamoorthy, S., and Cao, W. M., “Finite state induced flow models part I: Two-dimensional thin airfoil”, *Journal of Aircraft*, Vol. 32, No. 2, 1995, pp. 313-322.

[32] Peters, D. A., and He, C. J., “Finite state induced flow models part II: Three-dimensional rotor disk” *Journal of Aircraft*, Vol. 32, No. 2, 1995, pp. 323-333.

[33] Theodorsen, T., “General theory of aerodynamic instability and the mechanism of flutter”, Technical report, NACA Report 496, 1935.

[34] Chung, S.-J., and Dorothy, M., “Neurobiologically inspired control of engineered flapping flight”, *Journal of Guidance, Control and Dynamics*, Vol. 33, No. 2, 2010, pp. 440-453.

[35] Lee, J.-S., Kim, J.-K., Kim, D.-K., and Han, J.-H., “Longitudinal flight dynamics of bioinspired ornithopter considering fluidstructure interaction”, *Journal of Guidance, Control, and Dynamics*, Vol. 34, No. 3, 2011, pp. 667-677.

[36] Heathcote, Martin, S., D., and Gursul, I., “Flexible flapping airfoil propulsion at zero freestream velocity”, *AIAA Journal*, Vol. 42, No. 11, 2004, pp. 2196 – 2204.

[37] Heathcote, S., Wang, Z., and Gursul, I., “Effect of spanwise flexibility on flapping wing propulsion”, *Journal of Fluids and Structures*, Vol. 24, 2008, pp. 183-199.

[38] Thomas, A. L. R., and Taylor, G. K., “Animal flight dynamics I. stability in gliding flight. *Journal of Theoretical Biology*, Vol. 212, 2002, pp. 399-424.

[39] Taylor, G. K., and Thomas, A. L. R., “Animal flight dynamics II. longitudinal stability in flapping flight”, *Journal*

of *Theoretical Biology*, Vol. 214, 2002, pp. 351 – 370.

[40] Sachs, G., and Holzapfel, F., “Flight mechanic and aerodynamic aspects of extremely large dihedral in birds,” In *Proc. AIAA Aerospace Sciences Meeting and Exhibit 2007*, Reno, NV, 2007.

[41] Sachs, G., “What can be learned from unique lateral-directional dynamics properties of birds for mini-aircraft” In *Proc. AIAA Atmospheric Flight Mechanics Conference 2007*, Hilton Head, SC, 2007.

[42] G. Sachs. “Why birds and miniscale airplanes need no vertical tail,” *Journal of Aircraft*, Vol. 44, No. 4, 2007, pp. 1159 – 1167.

[43] Paranjape, A. A., and Chung, S.-J., “Flight mechanics of a tailless articulated wing aircraft,” In *Proc. AIAA Atmospheric Flight Mechanics Conference*, Toronto, Ontario, Canada, 2010.

[44] Paranjape, A. A., “Dynamics and Control of Robotic Aircraft with Articulated Wings,” Ph.D. thesis, Univ. of Illinois at Urbana-Champaign, Urbana, IL, United States, 2011.

[45] Mwongera, V. M., and Lowenberg, M. H., “Bifurcation analysis of a flapping wing mav in longitudinal flight,” In *Proc. AIAA Atmospheric Flight Mechanics Conference*, Minneapolis, MN, 2012.

[46] Leonard, B. Y., “Flapping wing flight dynamic modeling,” Master's thesis, Virginia Polytechnic Institute and State University, 2011.

[47] Guckenheimer, J., and Holmes, P., *Nonlinear Oscillations, Dynamical Systems and Bifurcations of Vector Fields*, Springer Verlag, New York, 1983.

[48] Paranjape, A. A., Sinha, N. K., and Ananthkrishnan, N., “Use of bifurcation and continuation methods for aircraft trim and stability analysis - a state-of-the-art,” *Journal of Aerospace Sciences and Technologies*, Vol. 60, No. 2, 2008, pp. 1 – 12.

[49] Dietl, J. M., and Garcia, E., “Stability in ornithopter longitudinal flight dynamics,” *Journal of Guidance, Control, and Dynamics*, Vol. 31, No. 4, 2008, pp. 1157 – 1162.

[50] Oppenheimer, M. W., Doman, D., and Bolender, M. A., “Control allocation for over-actuated systems,” *14th Mediterranean Conference on Control and Automation*, Ancona, Italy, 2006.

[51] Abdulrahim, M., Garcia, H., and Lind, R., “Flight characteristics of shaping the membrane wing of a micro air vehicle,” *Journal of Aircraft*, Vol. 42, No. 1, 2005, pp. 131-137.

[52] Paranjape, A. A., Kim, J., Gandhi, N., and Chung, S.-J., “Experimental demonstration of perching by a tailless articulated wing MAV,” *AIAA Guidance Navigation and Control Conference*, Portland, OR, 2011.

[53] Zhao, Y. J., “Optimal patterns of glider dynamic

soaring,” *Optimal Control Applications and Methods*, Vol. 25, 2004, pp. 67 – 89.

[54] Sachs, G., Lenz, J., and Holzapfel, F., “Optimization of flap-bounding flight,” *AIAA Atmospheric Flight Mechanics Conference*, Portland, OR, 2011.

[55] Sachs, G., Lenz, J., and Holzapfel, F., “Performance enhancements by bounding flight,” *AIAA Atmospheric Flight Mechanics Conference*, Minneapolis, MN, 2012.

[56] Cao, C., and Hovakimyan, N., “Design and analysis of a novel L1 adaptive control architecture with guaranteed transient performance,” *IEEE Transactions on Automatic Control*, Vol. 53, No. 2, 2008, pp. 586 – 591.

[57] Hovakimyan, N., Lavretsky, E., and Sasane, A., “Dynamic inversion for nonaffine-in-control systems via time-scale separation,” Part I. *Journal of Dynamical and Control Systems*, Vol. 13, No. 4, 2007, pp. 451 – 465.

[58] Bhatia, M., Patil, M., Woolsey, C., Stanford, B., and Beran, P., “LQR controller for stabilization of flapping wing MAV in gust environments,” *AIAA Atmospheric Flight Conference*, Minneapolis, MN, 2012.

[59] Hedrick, T. L., and Biewener, A. A., “Experimental study of low speed turning flight in cockatoos and cockatiels,” *AIAA Aerospace Sciences Meeting and Exhibit*, Reno, NV, 2007.

[60] Tian, X., Iriarte, J., Middleton, K., Galvao, R., Israeli, E., Roemer, A., Sullivan, A., Song, A., Swartz, S., and Breuer, K., “Direct measurements of the kinematics and dynamics of bat flight,” *36th AIAA Fluid Dynamics Conference and Exhibit*, San Francisco, CA, 2006.

[61] Aldridge, H. D. J. N., “Turning flight of bats,” *Journal of Experimental Biology*, Vol. 128, 1987, pp. 419 – 425.

[62] Iriarte-Diaz, J., and Swartz, S. M., “Kinematics of slow turn maneuvering in the fruit bat *Cynopterus brachyotis*,” *Journal of Experimental Biology*, Vol. 211, 2008, pp. 3478-3489.

[63] Dorothy, M., and Chung, S.J., “Methodological remarks on CPG-based control of flapping flight,” *AIAA Atmospheric Flight Mechanics Conference*, Toronto, ON, Aug. 2010. [64] Chung, S.-J., Dorothy, M., and Stoner, J. R., “Neurobiologically inspired control of engineered flapping flight,” *AIAA Infotech at Aerospace and Unmanned Unlimited Conference and Exhibit*, Seattle, WA, Apr. 2009.

[65] Kuang, P. D., Dorothy, M., and Chung, S.-J., “Robobat: Dynamics and control of a robotic bat aping flying testbed,” *AIAA Infotech at Aerospace Conference*, St. Louis, MO, 2011.

[66] Paranjape, A. A. Guan, J. Chung, S.-J., and Krstic, M. “PDE Boundary Control for Flexible Articulated Wings on a Robotic Aircraft,” *IEEE Transactions on Robotics*, to be published, 2012.